



Massachusetts Department of Public Health

MDPH Tuesday Infectious Disease Webinar Series

Tools for Local Boards of Health

March 11, 2025

Hillary Johnson, MHS

Senior Epidemiology Advisor to Local Health, Division of Epidemiology

Scott Troppy, MPH, PMP

Senior Epidemiologist – MAVEN User Management & Data Visualization Lead

Lionel White, MSIT

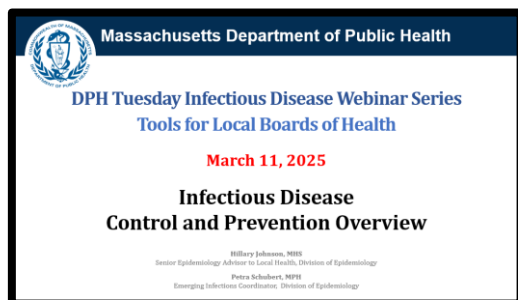
Senior Surveillance Research Analyst, MAVEN Training Team

Julie Coco, MPH

Internship Program and Training Coordinator, Division of Epidemiology

Petra Schubert, MPH

Emerging Infections Coordinator, Division of Epidemiology



March 11, 2025

- **Morbidity Updates**
 - Measles Update
 - HPAI Update
- **Environmental Health Contacts in Communication Events**
- **MAVEN Updates**
 - K Release Updates
 - MAVEN Race Variable
- **Featured Presentation: Infectious Disease Control and Prevention Overview**
 - Hillary Johnson, MHS, Senior Epidemiology Advisor to Local Health, Division of Epidemiology
 - Petra Schubert, MPH, Emerging Infections Coordinator, Division of Epidemiology

“In March I’ll be rested,
caught up and human.”

-Sylvia Plath

*What day in March Sylvia...
Sylvia please...
What day in March.....*

MAVEN Release - LBOH



A few items in the next release of MAVEN for LBOH:

- Reviewed/Cleaned up list of organizations in the Step 3-LBOH/Agency.
- Added a SSA (Shared Services Agency) option in Step 3 with a free text for filling out information for your SSA
- Added Official City to LBOH workflows (includes TB workflows and Shared Cases workflows).
- Create an Infection Prevention Communication module (similar to the LBOH Communication Event – *more information to come as we bring this online in the next few weeks*). Think of this as a lookup for facilities and infection preventionist that are online using MAVEN
- Add Environmental Health Contacts to the Communication event.

Programmatic Release Highlights

- Updating **CALC_RACE** variable to include multi-race option
 - Updating the Calculated Race calculation so that when there are multiple race iterations for an event (excluding Unknown) Calculated Race is set to **Multi-race** rather than **Other**.
- Modifications to allow for wider negative Hepatitis C reporting and identification of acute cases via seroconversions
- LBOH Report Changes for Hepatitis B and Hepatitis C
 - The following LBOH reports will have one category for **Hepatitis B and Hepatitis C**, as opposed to separating acute from chronic: LBOH Event Information Extract by Disease, LBOH Event Information Extract by Disease and Region, LBOH Count by Received Date and LBOH Events by Week by Event Date
- Expanded Electronic Case Reporting (eCR) functionality
 - A notification will appear on the dashboard of an event when eCR data are available in the Electronic Case Reporting question package

Infectious Disease Tools for LBOH Webinar Schedule!

2025 Upcoming Schedule!

All Registrations:	http://tinyurl.com/MAVEN-Webinars
2 nd Tues 3/11/25	Case Investigation Updates 2025
4 th Tues 3/25/25	4 th Tuesday Office Hours
2 nd Tues 4/8/25	Tuberculosis
4 th Tues 4/22/25	4 th Tuesday Office Hours
2 nd Tues 5/13/25	Viral Hepatitis
4 th Tues 5/27/25	<i>Canceled - No May Office Hours</i>

WEBINAR REGISTRATION PAGE:

<http://tinyurl.com/MAVEN-Webinars>

- You help us identify topics, needs, & content!
- Be sure to send ideas, requests, and questions to Hillary and Scott!

MAVEN Help has Guidance Documents and Previous Webinars:

<http://www.maven-help.maventrainingsite.com/toc.html>



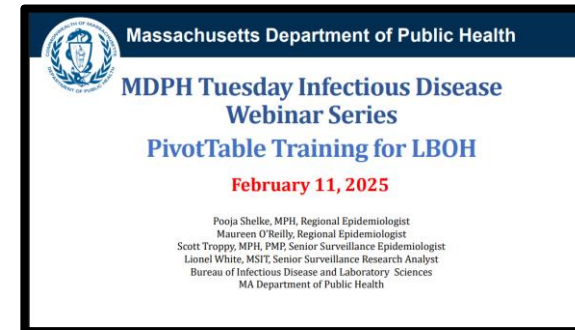
You can always contact
mavenhelp@mass.gov or
The MDPH Epi Program
at 617-983-6800 with
specific questions.

Next Office Hours
Tuesday, March 25, 2025 @11:00!

Updates – A quick recap for March 11, 2025

February 11, 2025:

- Updated Viral Hepatitis Surveillance Report published!
- H5N1 Avian Influenza Updates
- MAVEN Reminders for 2024 Case Closeout
- **Featured Presentation:** Pivot Tables for Local Boards of Health
 - Pooja Shelke, MPH, Regional Epidemiologist
 - Maureen O'Reilly, Regional Epidemiologist
 - Scott Troppy, MPH, PMP, Senior Surveillance Epidemiologist
 - Lionel White, MSIT, Senior Surveillance Research Analyst



Presentation: [PDF Slides](#), [Recording](#)



Always Remember you
can see recent
webinar recordings
and slides in MAVEN
Help.

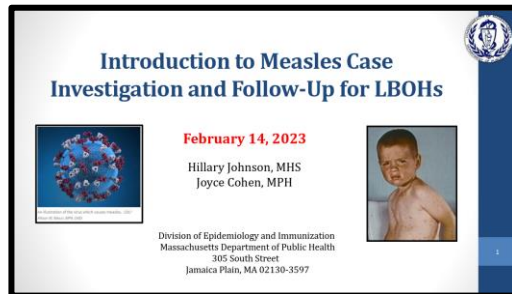
Bookmark the URL!

MAVEN Help: <http://www.maven-help.maventrainingsite.com/toc.html>

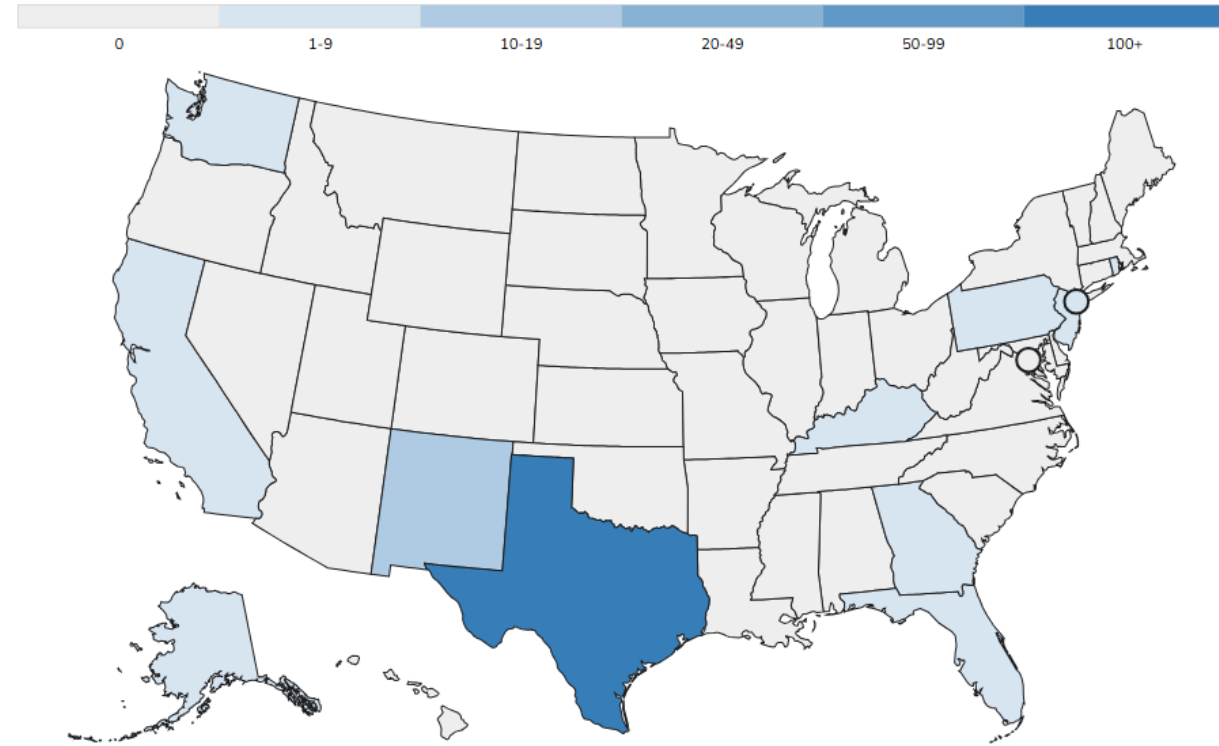


U.S. Measles Cases, 2025

- **No cases of measles in Massachusetts**
- As of March 6, 2025, a total of **222** measles cases were reported by 12 jurisdictions.
- There have been **3 outbreaks** (defined as 3+ related cases) reported in 2025, and 93% of cases are outbreak-associated.
- **1 confirmed death**, 1 currently under investigation in the U.S. in 2025.
- Measles training on MAVEN Help:

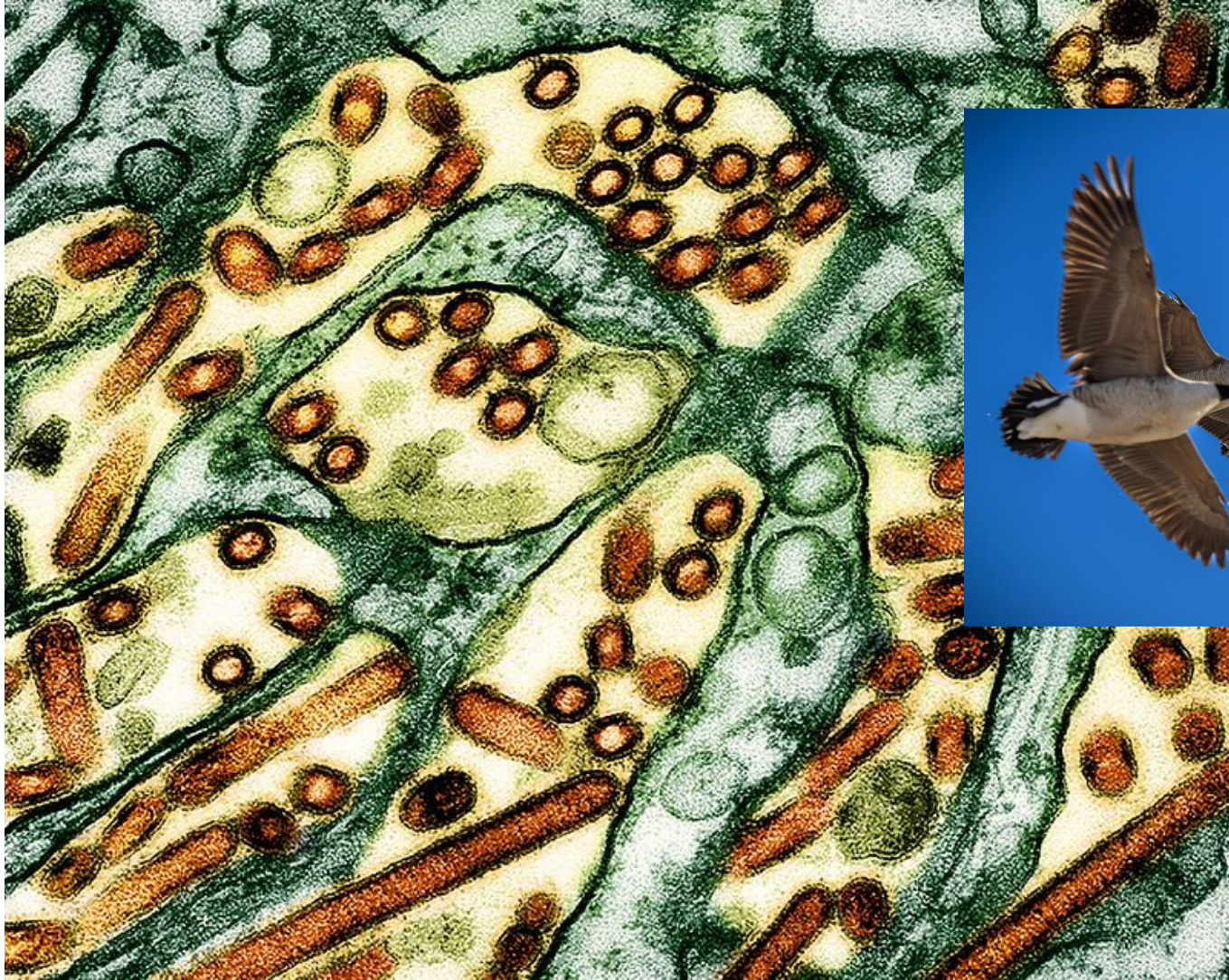


[Intro to Measles Case Investigation and Follow-up](#)



Data as of 3/6/2025. Source: <https://www.cdc.gov/measles/data-research/index.html>

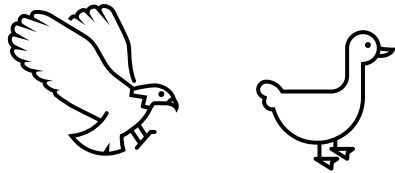
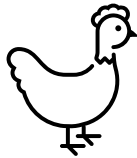
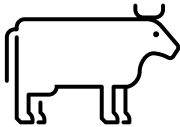
H5N1 Avian Influenza Updates



HPAI H5N1 Massachusetts, March 2025

- HPAI H5N1 remains primarily a Zoonotic Disease (animal to human)
- H5N1 human cases have been rare in the US and have been primarily associated with direct contact with infected commercial poultry or dairy cattle
- **No human cases have been identified in Massachusetts.**

HPAI Among Animals in MA, 2025

Wild Bird 	HPAI widespread among wild birds, primarily waterfowl
Domestic Birds 	2 backyard flock identified (as of 3/10)
Dairy Cows 	Milk supply from MA dairies remains negative. Milk is tested monthly.

<https://www.mass.gov/info-details/avian-influenza>

<https://www.cdc.gov/bird-flu/situation-summary/data-map-commercial.html>

National situation summary

NONE

LOW

70 cases

1 cases

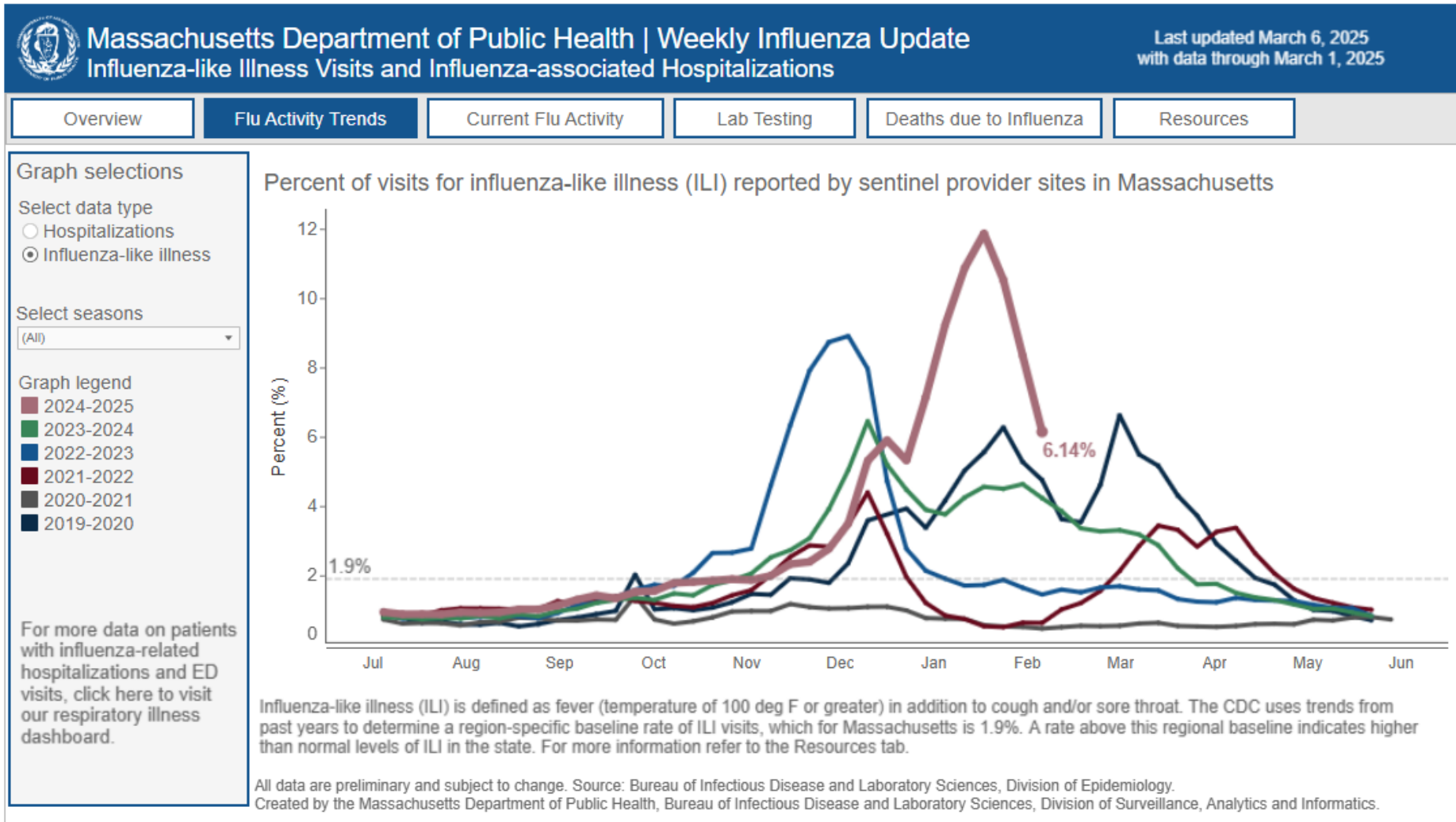
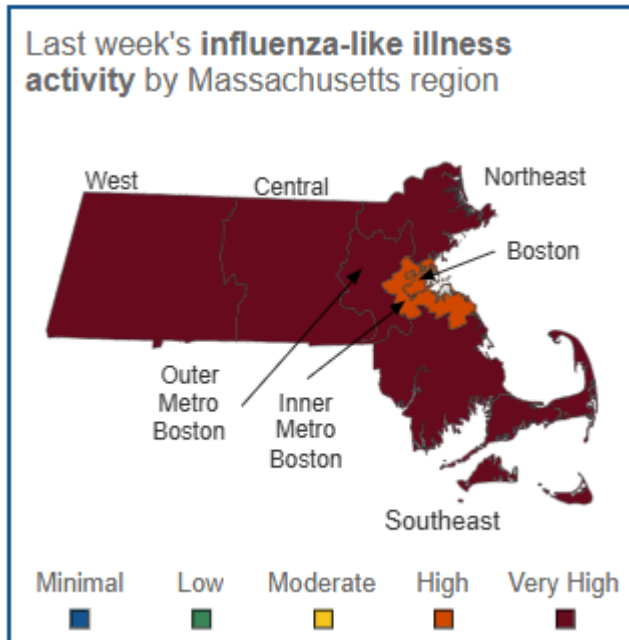
National

0

>10

Massachusetts Department of Public Health | mass.gov/dph

Seasonal Influenza in Massachusetts



<https://www.mass.gov/info-details/respiratory-illness-reporting>

Environmental Health Contacts in MAVEN Communication Events

- ***NEW!*** A new section was added to MAVEN Communication Events in February 2025 to capture **Environmental Health Contacts at Local Boards of Health.**
- This new section will allow DPH MAVEN users in the Bureau of Climate and Environmental Health (BCEH) **Division of Food Protection** to quickly identify who to contact for various environmental health responses. The listed Environmental Health contact(s) may be emailed or called with notification of:
 - Foodborne illness complaints involving one ill person;
 - Suspected foodborne illness outbreaks;
 - Food traceback requests;
 - Recall audit checks; or,
 - Complaints involving retail food establishments with no associated illness.

Environmental Health Contacts					
First Name	Last Name	Title	Email	Phone	Mobile Phone
<input type="text"/>	<input type="text"/>	<input type="text"/>	<input type="text"/>	<input type="text"/>	<input type="text"/>

Environmental Health Contacts in MAVEN Communication Events

- **ACTION NEEDED:** Please log into your city or town’s Communication Event in MAVEN and add individuals who would be responsive to time-sensitive environmental health communications and requests.
 - Contacts listed should be individuals who oversee and/or conduct inspections of food establishments.
 - If the individual is already listed in another section of the Communication Event, they should still be added to the “Environmental Health Contact” section.
 - **Note Primary and Secondary Contacts & Contact Method Preferences.** Please indicate in the “Comments” section of the Communication Question Package those who are designated as primary and secondary contacts for notification of time sensitive communications and specify which method of communication is preferred, email or telephone.
 - Time sensitive communications may include requests for outbreak response, tracebacks, recall audit checks, etc.
- For more information on how to access and update your town’s Communication event, please visit: [MAVEN Tip Sheet Series: Communication Events](#)

Environmental Health Contacts					
First Name	Last Name	Title	Email	Phone	Mobile Phone
<input type="text"/>	<input type="text"/>	<input type="text"/>	<input type="text"/>	<input type="text"/>	<input type="text"/>

QUESTIONS?

